



PSERN I-90 team pictured setting up camp, all materials were flown in by helicopter

THE DIRT

August 3, 2020, Summer, Volume 41

PSERN RADIO SYSTEM I-90

The PSERN I-90 project reached substantial completion in June after clearing the site and a helicopter pad, building a tower foundation, and installing a 180-foot repeater tower.

The team used a Chinook helicopter to import 200 cubic yards of gravel, 100 cubic yards of fill, and 80 cubic yards of concrete. The helicopter also flew all equipment in and out of the site. Weather was a challenge working in the mountains, some days the helicopter had to be grounded due to a lack of visibility. The project team also worked through design challenges when they discovered that the Geotech report did not match the site conditions, resulting in a quick design change, change order, and revised work plan. The team kept a great attitude and did a phenomenal job on this project!

PSERN SOBIESKI & MALONEY

IMCO's PSERN Sobieski and Maloney contract included clearing 15 miles of snow between the two PSERN sites, in some places snow 10-feet deep had to be cleared in order to begin work. The mountain top site is very tight with difficult access. Crews built an ultra-block retaining wall and poured a slab for a 50-foot temp tower and fuel slab. The team is currently waiting for Frontier (now Ziply) to migrate the existing communications from the existing tower to the new temp tower in order for demolition and drilling to begin in the large foundation shafts. Crews also installed a pre-built, 80,000-pound building on site.

The Sobieski site is located 45 minutes up a steep mountain roadway off of Highway 2 in Skykomish, WA. Getting materials up to the site is one of the biggest challenges. The team also battled swarms of mosquitoes. King County has been great to work with. "Darrell Asslen is the lead on this project and is kicking ass," says Superintendent, Casey Dougherty.



MTS weekend closure in June, pictured on pages 6 and 7, when crews installed the pedestrian tunnel across the I-90/405 interchange.



MOUNTAINS TO SOUND

The Mountains to Sound project hit several milestones recently, including the installation of the Precast Tunnel during a critical weekend closure, and the placement of a pedestrian bridge deck all in the same week. Both installations were successful, reflecting the hard work, planning and care by IMCO employees.

The crew is now embarking on the very challenging Geosynthetic radius walls that will serve as the bridge approach. Meanwhile, subcontractors are placing the decorative shotcrete facia that adds a unique aesthetic touch to the projects large retaining walls.

Despite some unforeseen design delays and changes during the course of the project, IMCO has been battling to stay on schedule. Currently, the team is working hard to complete the new trail by the original deadline of December 31st, 2020.

The COVID crisis and unpredictable summer weather haven't hindered the Mountains to Sound team, they have been doing their part to adhere to COVID guidelines, understanding the importance of complying to keep the project moving safely. The MTS team has been committed to accepting the new PPE policy and continue to go out in the field everyday smiling behind their masks.



Photo Courtesy of LMN Architects

MUKILTEO FERRY TERMINAL NEARS COMPLETION TEAM COLLABORATION TO MAKE UP SCHEDULE

The Mukilteo Ferry Terminal team has been committed to productivity, teamwork, and a strong safety culture throughout the project, which is nearing completion as the team works to re-sequence and plan for the final scopes of work. They have a goal of recovering the schedule that was disrupted due to the six-week COVID shutdown this spring. Mechanical and electrical elements are the most difficult to recover, and the team is collaborating with sub partners to plan ways to make up time.

Crews have begun final paving of the upland areas and are expediting final architectural elements including wall cladding, paint, and ceiling installation.

Commissioning will begin this month. IMCO's project management team is working with Shinn Mechanical, Dutton Electrical, and WSDOT/WSF to prepare for commissioning. This will involve multiple commissioning agents working together to ensure all systems are tested and fully functional.

IMCO's project team will be pushing hard through the summer and into early fall to ensure a safe and smooth opening of this marquee ferry terminal at the end of the year. The team still has five types of handrail and four types of paving to install, commissioning to perform, and architectural components to complete. Three months of work will be completed in early 2021 following opening of the new terminal.

This project is one of the most high-profile projects in IMCO's history with hundreds of pedestrians walking by daily, abundant public attention, and great anticipation around the construction of this beautiful new space. Couple this with the current pandemic and associated health precautions and public scrutiny, and our crews are very much under the microscope on a daily basis. Our team has a great amount of pride in this project, and is enjoying the challenge. It will be a fun space to visit and show-off to our families and friends for years to come.

ON THE MOVE SOUTHERN IDAHO EXPANSION

In July IMCO opened a new regional office in Boise to support our projects and pursuit of opportunities in Southern Idaho and the Treasure Valley region. This geographical market has been part of our strategy for several years as our team has monitored growth opportunities within our core market sectors and tested the market. The region is home to many existing and prospective clients who procure work that fits IMCO's sweet spot. These clients include the US Army Corps of Engineers, Bureau of Reclamation, Idaho Power, City of Boise, Midas Gold, Idaho Transportation Department, Darigold, and many growing municipalities.

"Our move into Southern Idaho and the surrounding Treasure Valley region is a strategy to grow opportunities for our people and expand IMCO's key markets," said CEO Tyler Kimberley. "The area is growing, accessible, and a cultural fit for IMCO."

The Boise area has seen significant population growth over the last decade, becoming a hub for technology and industrial companies seeking a reasonable cost of living and space to expand. The area has also attracted retirees from Washington and California. Rapid growth has put strain and demands on existing infrastructure. Private and government funding will support improvements to roadways, bridges, water resources, treatment facilities, industrial infrastructure, and power sources in order to meet the needs of this growing area.

Over the last four years IMCO's team has been working to strategically grow a strong hydroelectric profile. Southern Idaho, Eastern Washington, and Oregon are home to dozens of dams and fish facilities that require maintenance and upgrades. Southern Idaho is also home to a very strong industrial sector. Hydroelectric and industrial facilities typically require retrofit construction in operating environments, and clients in these sectors value the innovative problem solving, relentless safety, and culture of continuous

improvement and efficiency that IMCO brings. "I see this as a strategic growth market for IMCO, with the goal of the Boise region becoming 20% of our business over the next four to five years," said Kimberley.

Another factor that has inspired our expansion to southern Idaho is the excitement by many of our employees at the prospect of relocating to this region. The greater Boise area is known for a variety of recreational activities, proximity to mountains, lakes, and rivers, and for the overall quality of life. The City has invested in the development of a vibrant and pristine downtown district and expansive greenbelts, parks, and trail systems.

Senior Project Manager Brett Himes moved with his family to Boise earlier this summer. Brett will lead our pursuits and projects in the region, and he is excited about the new clients and opportunities we continue to learn about, many with similar core values to IMCO, many who value our team's experience and the services we provide. Brett will be working to build a team in the region through means of hiring local managers and craft. As we grow in this region, there will be opportunities for other current IMCO craft and management to experience Idaho if they have the desire to live and work there.

SEHOME HILL COMMUNICATION TOWER

IMCO is joint venturing with TKK Communications who will manage the relocation of the communication equipment at the Sehome Hill communication tower in Bellingham, WA. IMCO will demo the old tower, foundations, and utility building, and then apply topsoil and plants to create a natural landscape.

This bid was Brandon Wallman's first win as an estimator! The crew plans to mobilize to the site by mid-August, and work will be completed in October.

STONEY GATE

IMCO's team at the Stoney Gate project is currently preparing the south gates for removal and replacement. These gates are located in the middle, "river wall," side of the locks. This scope includes concrete demolition, mechanical equipment removal, electrical modifications, cleaning, and painting. All of this work is in preparation for the project's next 45-day lock closure starting October 15th. During the 45-day closure IMCO's team will be working 24 hours a day to simultaneously remove and install three new gates within the culvert while the large lock chamber is emptied. IMCO will ramp up crews during this time to ensure work is completed within this critical time frame.

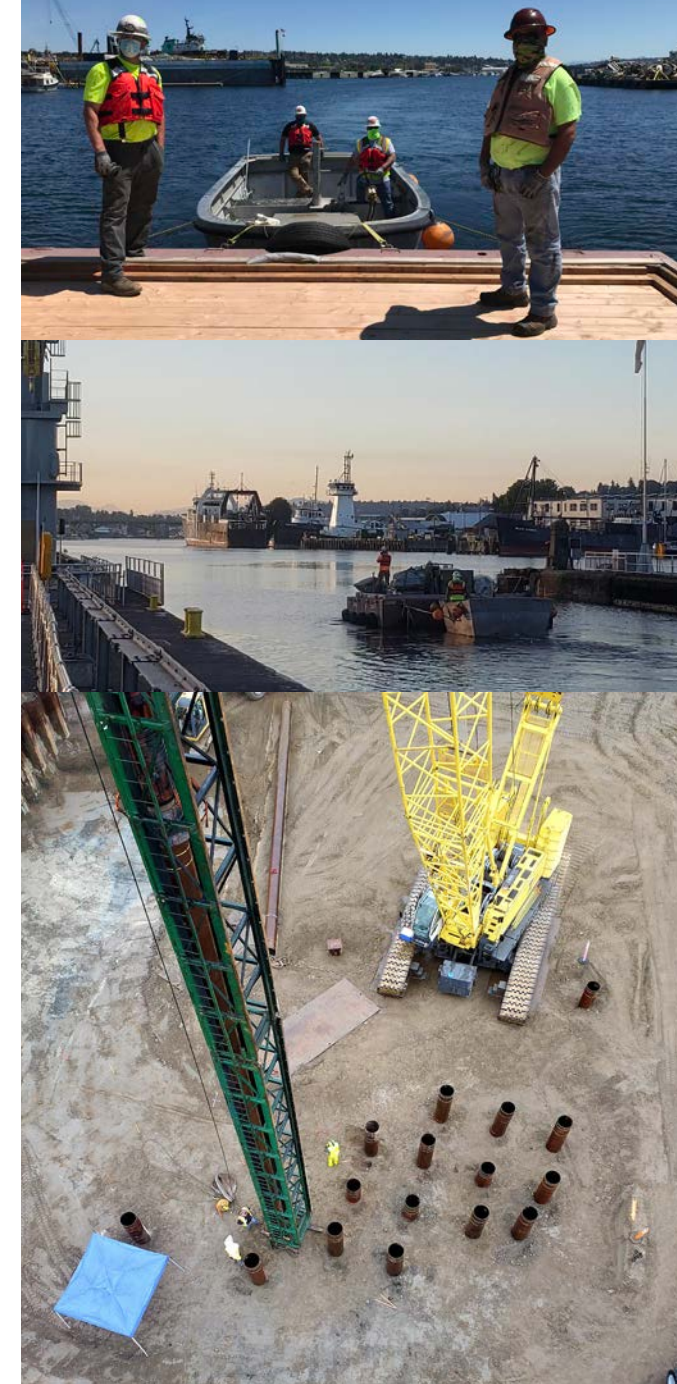
IMCO's team recently worked with the USACE to re-sequence the gate installations, resulting in the elimination of one dewatering window, which will reduce the project schedule by nearly four months. Receiving approval for this re-sequencing effort was a major project accomplishment and a huge testament in the USACE's confidence in IMCO's crews to deliver the remaining gate installations in an extremely tight working window.

ANACORTES SKAGIT RAW WATER

Work at the Skagit River Raw Water Pipeline project is moving ahead quickly this summer. The project involves construction of a new raw water pipeline under the Skagit River to the City of Anacortes water treatment facility, which IMCO expanded in 2013. The 42-inch welded steel pipeline will be installed using horizontal directional drilling fifty feet below the river bed. The project also includes construction of a new 2.1-million-gallon welded steel clearwell tank and improvements within the tank, which IMCO crews installed as part of the 2013 contract.

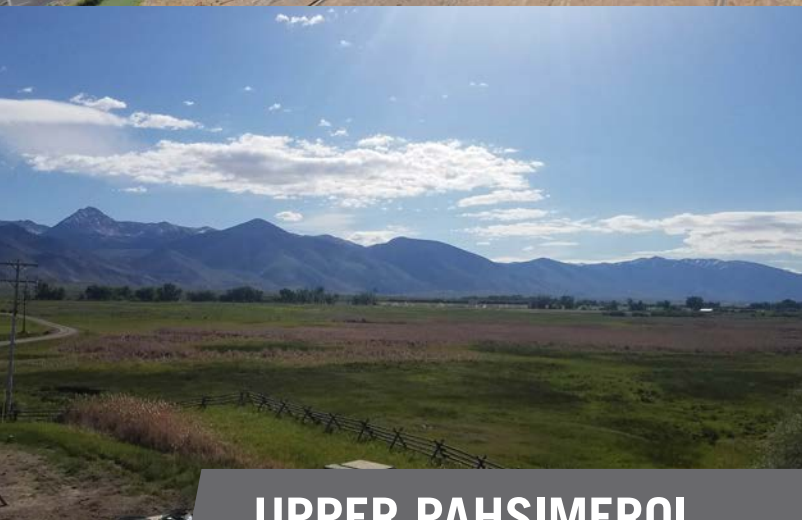
IMCO's team, led by Superintendent Lonnie Dotson and foreman Mac Allen, recently completed pile driving for the foundation of the new clearwell tank. Doug Davis is leading our welding effort in the dust and heat, welding on 157 pile top plates. The first delivery of large diameter piping was received, and the team can now begin installing the under-tank water conveyance pipe. Once the pipe is installed, forming will begin for the first pour of the 1,000-yard concrete tank pad. The cast-in-place valve and meter vault slab has been poured and the walls are currently being formed and reinforced.

IMCO will begin receiving the large diameter steel pipe for the river crossing in mid-September; with the directional drilling under the Skagit River expected to start in late September.



Pictured top and middle: Stoney Gate crew floating equipment necessary to access the gate location for the upcoming lock closure, accessible only by water. Pictured above: Pile driving at the Anacortes Skagit Raw Water project.

IMCO has collaborated in the redesign of the baffle system within the tanks, working closely with the tank builder, the supplier of the baffles, and the City's engineer HDR to implement a new design of the system that will make it more efficient in mixing in chlorine to disinfect water and easier to install.



UPPER PAHSIMEROI

Last month IMCO completed our first project working for Idaho Power. The Upper Pahsimeroi Fish Hatchery project involved replacement of an aeration tower in a remote area of Southern Idaho. Crews finished commissioning the end of July, ahead of schedule. Idaho Power is a strategic IMCO client who owns and operates 17 hydroelectric dams along the Snake River and its tributaries.

Since starting this project at Pahsimeroi, IMCO has been asked to bid on three additional Idaho Power projects. Our team is looking forward to continuing to work for this major regional hydropower client in the near future.

VANTAGE BAY DEVELOPMENT

On June 30th IMCO was awarded the Vantage Bay Development project located in Kittitas County, near Vantage, WA. The owner is a new client for IMCO. A majority of the work includes mass clearing and grading, road construction; sewer, water and storm drainage systems to prepare lots for future residences. The team started July 6th and will complete the project this winter. This project is a great opportunity to keep our team and equipment working while we anticipate the startup of the Priest Rapids Right Embankment Improvement Project.



WORKING IN
THE FACE OF
A PANDEMIC
REQUIRES
RELENTLESS
COMMITMENT

In order to keep our people safe and our projects productive we must stay vigilant. Please maintain social distancing, keeping six feet away from others, whenever possible. All personnel must wear masks if social distancing is not possible. If you have COVID-19 symptoms or if you suspect you have been exposed to the virus, please get tested! Contact IMCO's director of HR or the director of safety if you would like information about where or when to get tested.

ROCKY REACH TRASH BOOM CABLE

IMCO was awarded the Rocky Reach Trash Boom Cable contract for Chelan County PUD on June 11th. The project is located near Wenatchee, WA and will begin on September 8th. Work includes disconnecting the existing cable and replacing it with new cable and floats.

YESLER TERRACE BLOCK 6 PUBLIC ACCESS DRIVE INTO PHASE 2

IMCO's Yesler project team has been working with Seattle Housing Authority, Seattle Department of Transportation, Seattle Public Utilities, and Seattle City Light to gain approval to begin utility work on phase two, which commenced in June. At the end of phase one the team preloaded the site with several feet of additional dirt to prepare for phase two, and our crew has recently removed the 5000 yards of preload in order to install water, sewer, stormwater and electrical infrastructure. This contract is preparing the site for Seattle Housing Authority to build affordable housing and for the construction of individual lots, apartment complexes and residential developments. The contract includes concrete pier slope stabilization, tree protection and removal, stormwater control, utility demolition, construction of water, storm, and sanitary sewer, paving, and the restoration of streets, sidewalks, and landscaping.

IMCO has a small team working together on site to embrace challenges and maintain a spirit of resilience as they continually adapt and recover from the impacts COVID is having on Seattle and our way of life, primarily delaying decision-making and increasing anxiety. The team is also faced with the stress of adjacent protests in downtown Seattle. Project Manager Cameron Vest has appreciated the teamwork and adaptability from this team. Clay Dickenson and Rick Knowles have been instrumental in leading this project team in the heart of Seattle. Intern Danny Ngo has been a welcome addition to the team and is preparing to return to WSU to finish his degree. The project has recently brought on several new crew members to join the team. Thank you, Corey, Carla, Jacob, Lyle, and Tyson, for all the hard work!

The upcoming sewer tie-in under Jackson Street will be a major project challenge. The contract includes installation of a manhole in the middle of Jackson Street between two streetcar lines. This has called for innovative thinking and the design of a unique liner plate shoring system. Once approved by the City of Seattle, the project team will move forward with the shoring procurement to hit the target schedule date in September. As the liner plate system is being installed, guided auger bore will be used to install the new sewer line under Jackson Street and the active street car lines above. Significant consideration has been made to minimizing impacts to Jackson Street, Public Transportation and the general public.

Once the utilities are installed, the asphalt and concrete paving for Yesler Block 6 Private Access Road will follow in late September.

