



February 4, 2020
Winter vol. 39

THE **DIRT**

STONEY GATE VALVE REPLACEMENT ▲

The Ballard Locks (pictured above) is a popular Seattle destination for visitors and locals. IMCO's team is completing a complicated contract for the U.S. Army Corps of Engineers (USACE) in a location buzzing with boat traffic and pedestrians. Crews completed the first 45-day locks closure, removing the old and installing the new culvert gate valve, the first of six to be replaced under this contract.

The project team is now working in a 60-day partial closure, taking the equipment that

Continued on page 5.

NEW CONTRACT

PRIEST RAPIDS RIGHT EMBANKMENT IMPROVEMENT

This exciting new project is located at Priest Rapids Dam on the Columbia River near Ephrata, Washington. IMCO crews will break ground this spring. The contract will replace an earthen dam, add reinforcement to the right bank of the river to address the stability of the embankment, and improve earthquake safety. The site will be excavated down to the bedrock, and a roller compacted concrete dam will be built to reinforce the existing embankment. Work should not have any impact on the current operations at Priest Rapids Dam.

Our team is looking forward to working again with the client, Grant County PUD, on this \$33.4 million contract. In 2014, IMCO successfully completed the Priest Rapids Hatchery for the same client. IMCO tracked this Priest Rapids Right Embankment opportunity for nearly two years.

MADISON DAM TURBINE-GENERATOR REPLACEMENT

NORTHWESTERN ENERGY

IMCO is upgrading 109-year-old turbines and generators for Northwestern Energy's powerhouse along the Madison River in Ennis, Montana. The original powerhouse building will remain in place, while four new turbine-generator units are installed inside. The four units will be updated to a modern design, moving from two turbines per unit to one. In addition to increased energy capacity and efficiency compared to the present generators, the new units will be more fish friendly.

To date, all existing turbines and generators have been removed and crews are half-way through the sub-floor demolition.

In mid-March, we will start the next phase of construction with concrete and structural steel being placed to meet our June 15th deadline, so the new turbines can be installed.

Corey Davis, Corry Eddings, Jake Johnson, and John Neibert, have all done an amazing job battling through the tough weather conditions that Montana winters bring. This has been a very challenging project, and they have executed the plan well. With all the changing conditions and frigid weather, their vigilance is critical.

"A big shout out to the crews' families. It's not easy being away for weeks at a time. We appreciate our team's commitment and their families' commitment as well," said Richie Jordan.



Working to demolish turbines at the Madison Dam in Ennis, Montana.



YESLER BLOCK 6 PUBLIC ACCESS DRIVE

Over the last several months, IMCO's team has been working alongside subcontractor Malcolm Drilling to stabilize a notoriously unstable slope in preparation for a new Seattle Housing Authority complex that will usher in new low-income housing in downtown Seattle (pictured above).

Since construction began in late August, crews have installed 48 eight-foot diameter concrete piers, each drilled 50 feet deep. IMCO is building the grade beam across the top of these piers. The cast-in-place grade beam is 450 feet long and almost 1,000 cubic yards. The grade beam ties all of the drilled piers together. The team is pouring it in five segments, and it will ultimately be buried.

Starting in early summer, our team will begin pre-loading the site. At this time, final grade will be raised by three feet and the settlement plates will be monitored for three months. After close monitoring, our team will strip the load off and begin with Phase 2 scopes of work that include underground utilities, electrical, water, sewer, and storm. The project scope also includes construction of a new Yesler Way Public Access Drive, a concrete roadway to connect Washington and 10th Streets.

Cameron Vest, Ricky Knowles, Clay Dickinson and Darrell Asseln are leading IMCO's efforts on site. IMCO is working closely with Seattle Housing Authority and engineer KPFF to mitigate issues related to project start-up. The project is scheduled to be complete in September 2020.

UPPER PAHSIMEROI FISH HATCHERY AERATION TOWER

NEW CONTRACT & NEW CLIENT, IDAHO POWER

The Pahsimeroi Fish Hatchery is located in Lemhi County, Idaho, 25 miles from Challis on the Pahsimeroi River. The hatchery complex consists of fish production facilities, both the upper and lower facilities are operated to mitigate impacts to anadromous fish associated with the construction and operation of Brownlee, Oxbow, and Hells Canyon dams on the Snake River. The lower facility functions as an adult trapping and spawning facility while the upper facility is a juvenile Chinook rearing facility.

This project will reconstruct the aeration tower and add an additional air handling building. It includes partial demolition and subsequent improvements of the existing well water aeration tower and construction of the new air handling building to improve the efficiency of the aeration tower.

Idaho Power is responsible for providing facilities capable of rearing one million summer Chinook smolts and providing spawning and incubation facilities capable of supplying sufficient eggs to produce 200,000 pounds of steelhead smolts annually.

Construction is scheduled to begin at the end of March 2020.

MOUNTAINS TO SOUND GREENWAY TRAIL

The Mountains to Sound project is progressing quickly this winter season, despite the recent inclement weather conditions. The overall goal of the project is to close the gap to this 100-mile long corridor between Factoria Boulevard and Lakemont Boulevard in downtown Bellevue. The Mountains to Sound Greenway Trail stretches 100 miles between the Seattle waterfront and Ellensburg, Washington.

Major elements of the project are underway, including construction of the pedestrian bridge over Factoria Boulevard. Michels Drilling has recently completed four drilled shaft foundations to support the new bridge, and concrete form work for the bridge has begun. IMCO's concrete crews will form the abutments, columns, and pier caps to complete the bridge and will work on various other project components this month, including storm drainage and soldier pile retaining walls.

In early April, our team is expected to perform the underground tunnel work that will allow pedestrians to travel underneath the I-90 off-ramp. IMCO will need to plan carefully, with only 47 hours allowed to shut down the ramp, excavate the trench, install pre-cast box culverts 170 feet wide across the roadway, and cover and rebuild the roadway for travelers.

The project team and crews continue to show a strong commitment to the IMPACT safety program and relentless attention to working safe. Over the last several weeks, IMCO crews have braved night time conditions, working unfavorable weekend and holiday hours to maintain the project schedule through cold weather conditions.

"This is an exciting project... The decorative finishes and urban design will make this a project that we are proud to show off," said Project Manager Casey Russell.

CHILDREN'S ADVERTISEMENT COMPETITION

Each year the Lynden Tribune hosts a kid's Design-an-Ad contest. This year Emily from Cascadia Elementary won the IMCO vote for her design. We especially love her depiction of our gear building roads and the 'Build Success' tag line. Thank you, to all the kids who participated and shared their talent with us!



SUPPORT FOR NORTHWEST YOUTH SERVICES

IMCO supports organizations that enrich, enhance and strengthen community, especially youth. Northwest Youth Services is a non-profit partner serving young people who are experiencing homelessness. Their core vision is that all young people have a place to belong, to be safe, heard and valued. Northwest Youth Services has recently embarked on a new emergency housing project that is especially important during these cold winter months. "The Ground Floor" is a partnership between First Congregational Church and Northwest Youth Services, providing housing for youth 24 and younger to get out of the weather, do laundry, shower, and share meals, all while accessing much needed services and support. Staffed by those who are trained to understand their individual situations, this project is the Bellingham community's first dedicated space for youth experiencing homelessness who are disconnected from resources.



IMCO WOMEN'S GROUP ENCOURAGES CONNECTION & SUCCESS

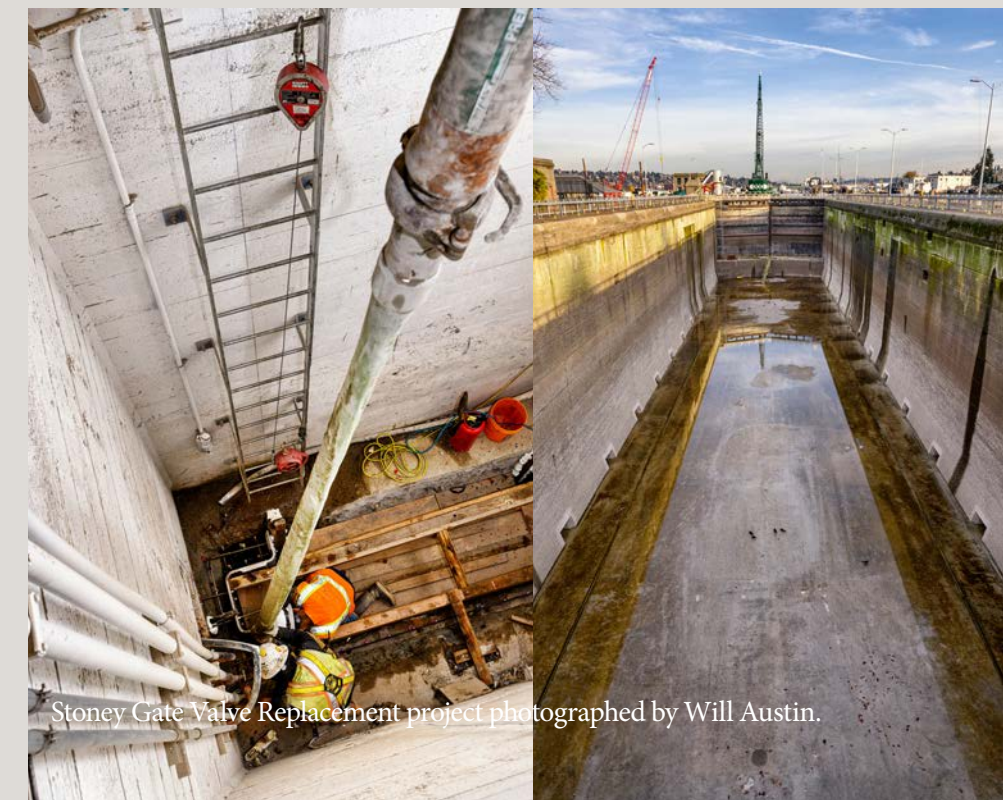
In December, IMCO's women's group, STEM, gathered to celebrate the holiday season with a white elephant gift exchange at the Kimberley home. The group connected and discussed STEM goals for the year.

Looking ahead, there will be three STEM events this year including a Mukilteo Ferry Terminal project site tour. STEM, which stands for strengthen, thrive, empower, and mentor, is IMCO's initiative to help women succeed and feel engaged at work.

IMCO FINISHES 2019 WITH TWO NEW BOEING AOG CONTRACTS

IMCO ended 2019 strong, with two airplane on ground (AOG) contracts for Boeing, supporting them in performing repairs for airlines. After Thanksgiving, Casey Dougherty flew to Los Angeles to support Boeing's AOG team during an engine repair. On Christmas morning, Casey and Adam Martin flew to Las Vegas to support the AOG team again, providing logistics and shelter for teams performing repairs to a wing tip. Boeing has been very happy with IMCO's ability to mobilize and respond quickly to the needs of their team.

Thank you, Casey and Adam, for your hard work over the busy holiday season!



Stoney Gate Valve Replacement project photographed by Will Austin.

StoneyGate, continued from page 1.

controls the gates out of service. The locks are still in service during this scope of work. The team is preparing the hydraulic power unit and the hydraulic cylinder for installation, receiving the metals package, which includes the 11 by 14-foot gate, and preparing for installation.

"Our biggest challenge to date has been meeting the completion deadline for the 45-day closure of the locks. We start the upcoming closure next week and will work 24-7 to ensure we complete it on time," explained Joe Lupo. The team has developed a very comprehensive schedule tool that allows for the entire team to see where the project is in real-time, making it easier for the team in the field to ensure they have everything they need to be successful.

The team's biggest success so far has been to show the client that IMCO is capable of condensing the schedule to remove a closure. This was a carefully coordinated effort that required strong communication and cohesive teamwork between IMCO and U.S. Army Corps of Engineers. Our team's work and the trust we have built allowed this change, which we anticipate to be an improvement for all stakeholders.