



Haul truck entering the RCC plant drive-through flanked by powder pummies where cement and fly ash are stored.



THE DIRT

February 10, 2023, Winter vol. 51

PRIEST RAPIDS RIGHT EMBANKMENT

IMCO's 50+ person team at Priest Rapids is tackling new challenges daily, through hard work and collaboration, building a \$60.9 million dollar project. The batch plant crew has stayed committed to keeping the operation safe and reliable despite the cold weather and limited maintenance time. The crew placing roller compacted concrete (RCC) has done a fantastic job placing, compacting, and protecting new work. During the cold temperatures, every morning and evening the entire surface is covered with insulated curing blankets to protect from snow, ice, water accumulation, and to keep the lift surfaces free from mud. The backfill and screening crews have been battling tight specifications for materials and freezing conditions, which often require covering and heating critical elements to protect surfaces and reduce rework.

"It is rewarding to work with such a dedicated and professional group on this project," said Alik Miller, senior project manager.

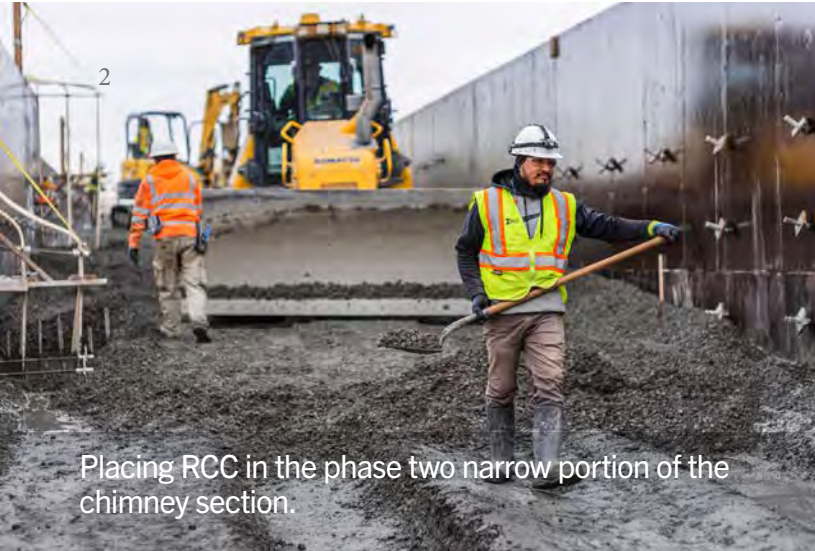
Crews are staying busy batching and placing RCC, the main feature of the new dam, and batching and placing conventional concretes across the site. This includes dental concrete (the foundation of the new dam), facing concrete (specialty concrete for the face of the dam), plastic concrete (bentonite infused concrete that moves under seismic pressures) and other miscellaneous ready-mix. Much of the mixes are IMCO-designed to achieve contract requirements for extremely delayed set and protection from thermal build-up/cracking. To achieve this, batch plant crews are running two concrete plants, sending mixes to multiple placing crews around the site almost every day.

The main portion of the RCC structure is advancing quickly. The

Continued on page 2.

45 YEARS BUILDING COMPLEX PROJECTS WITH INTEGRITY, EXCELLENCE & SAFETY





Placing RCC in the phase two narrow portion of the chimney section.



Left: Luke Bergford
Right: Jairo Morales



Joel Higgins

Continued from cover.

of 2022, achieving increases in daily averages, and even surpassing 1,100 cubic yards of RCC placed in a single day. The placing crew has also been implementing a new construction technique called the sloping layer method (SLM). IMCO is the first contractor in the United States to perform SLM in a production placing scenario. This method allows for better performance in cold weather, reduced joint preparation, and mitigation to impacts of precipitation on the RCC surface. SLM is also helping to reduce the amount of formwork needed to progress the construction while still maintaining a similar approach to cycling formwork. Crews will continue the RCC scope this spring. This includes backfilling the newly built structure which is required to closely follow the RCC to ensure maximum stability and prevention of potential dam failures.

Several subcontractors are working to stay ahead of RCC construction. This includes Budinger & Associates, who are drilling and pressure grouting the bedrock foundation. This grout curtain will close seams and fractures up

to 100 feet below the RCC and will prevent water seepage issues. Penhall Company is coring bedrock for anchoring waterstops in the new structure foundation. IMCO is installing double waterstops every 50 feet to ensure a watertight structure down to bedrock. Malcolm Drilling has mobilized their batching equipment to the site for concrete trial programs. Malcolm and IMCO are working together to produce plastic concrete for the planned secant pile wall to connect the new and existing dams into a single watertight structure.

The Priest team recently hosted the Oxbow project staff to tour the batch plants and discuss the team's knowledge gained and lessons learned to help ensure successful concrete batching operations on the Oregon project. It was an exciting opportunity to help another project with their planned operations and contribute to another successful project for IMCO.

“Self-performing the batching and placing of this material from two of our own commercially sized batch plants during these conditions is a feat that even seasoned ready-mix suppliers struggle to perform. Our teams have worked relentlessly to prepare and execute the self-performance of these operations, paying close attention to safety, efficiency, and over-all project performance. My sincerest appreciation goes out to every IMCO team member and their families for the continuous dedication. Thank you!”
— Operations Manager Fred Simmons



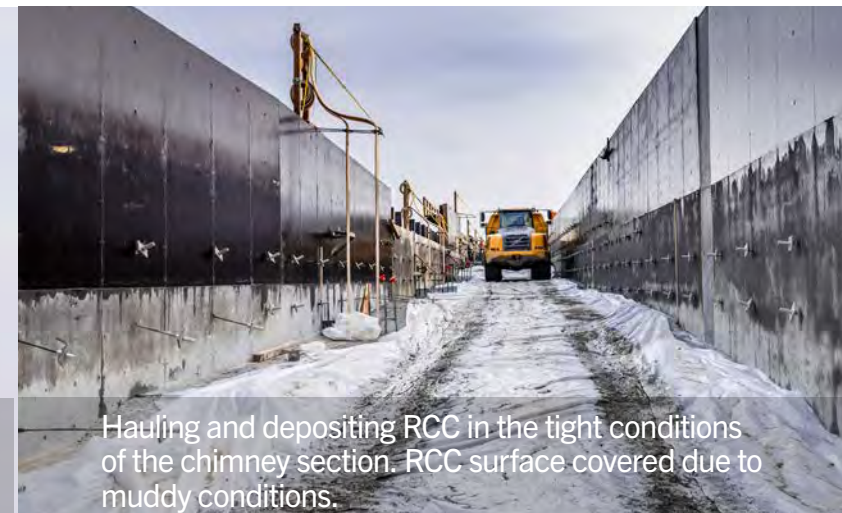
Custom built dry mix plant which produces plastic concrete, a specialty mix IMCO will supply to the drilling subcontractor.



Jack Jenson



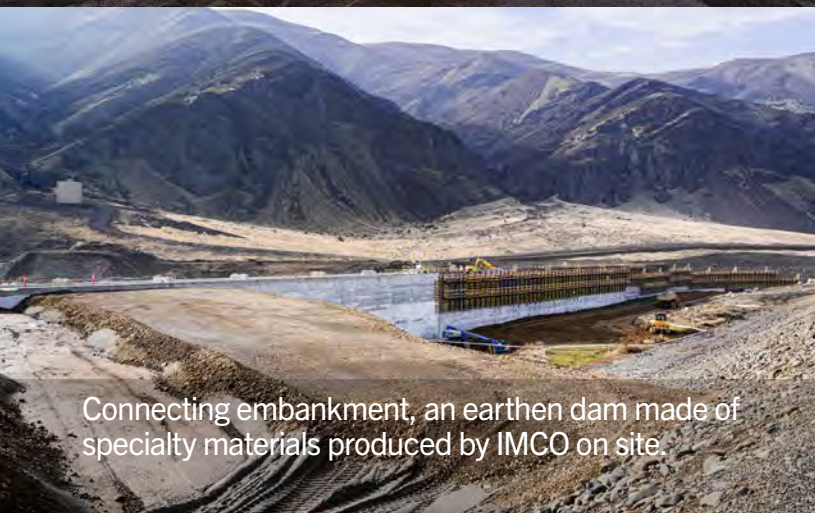
Toby Nason



Hauling and depositing RCC in the tight conditions of the chimney section. RCC surface covered due to muddy conditions.



IMCO's RCC wet mix plant capable of producing up to 275CY/HR.



Connecting embankment, an earthen dam made of specialty materials produced by IMCO on site.



Downstream face of structure, location of drain connections for the future embankment.



David Masterson



Jairo Morales

EAST KUNA DATA CENTER

The East Kuna team has found their rhythm while meeting milestones and conquering challenges. The entire 35-person team is split into six main groups working 10-hour days, five days a week. Creating separate teams has allowed multiple scopes of work to simultaneously meet targets. The six teams are made up of dedicated and skilled craft who are the heartbeat of this tough project, led by three superintendents: Kevin Zorza, Lonnie Dotson, and Taylor Barroso, who have worked to create a positive culture on-site.

“The team in southern Idaho has been grinding for the past three months. We have embraced the challenge of completing the bulk of our scope during the winter months to meet the project schedule. This has taken strong leadership, and it has been impressive to see several superintendents and project managers come together to lead one project. It is difficult to manage projects with multiple leaders in the same position. The superintendents and foreman have built a strong crew of new employees, long time IMCO craft, and crews from western Washington. I appreciate the hard work and perseverance from our team as they battle a challenging project and have fun while doing it,” said IMCO Operations Manager Brett Himes.

The weather has brought frozen challenges with temperatures often below 20 degrees. Placing material on frozen subgrade and laying pipe into frozen ground are seasonal challenges the Kuna team has been recently tackling. Finding a paperwork flow and focusing on building time management skills to complete the paperwork has been a great lesson learned for this team.

Upcoming milestones include the installation of 20,000 lineal feet of water, sanitary sewer, industrial wastewater, and irrigation pipe. Subcontractor Ness & Campbell Crane will help set thirty 40,000-pound precast structures. This will take collaboration and complex pick plans to uphold IMCO’s safety standards during this risky but exciting scope.

NEW WORK!

DOUGLAS COUNTY PUD HYDROGEN PRODUCTION FACILITY

In December IMCO was the successful low bidder on a new hydrogen production facility for Douglas County PUD, near Wenatchee, WA. Securing this work was a 13-month effort that included re-bids and scope changes. The third time was a charm! This facility uses water and power from the Douglas County PUD Wells Dam facility to produce green hydrogen using an electrolysis process. This facility is one of the first of its kind in Washington State to produce green hydrogen, which will be trucked throughout Washington to commercial customers. The work includes a pre-cast tilt-up building and a large mechanical piping scope. IMCO will be mobilizing this quarter, with completion anticipated by May 2024.

ANACORTES FERRY TERMINAL TOLLBOOTH REPLACEMENT

IMCO will break ground this month on a new project for the WSDOT Ferries group at their Anacortes Ferry Terminal. The project includes building a new service building, canopy, and four new tollbooths with associated utilities. The project is anticipated to be complete in early summer and will carry similar aesthetic features as the Mukilteo Ferry Terminal Project.

OXBOW HATCHERY RENOVATION PROJECT

This extensive, complex, and environmentally sensitive hatchery project has been on hold for four months, waiting on permits. The team is gearing up to begin remobilizing to Oxbow, Oregon this month for a March 1st start-date and is excited to continue this state-of-the-art hatchery project. Major scopes ahead for this project include demolition of the existing facility, an aeration tower, an adult holding facility, a sorting and spawning facility, and construction of hatchery, shop, and storage buildings.

LEWISTON WATER TREATMENT

PROGRESSIVE DESIGN BUILD

The Lewiston project is wrapping up early this year. The Pall equipment has been delivered and installed, and commissioning efforts have begun. IMCO, Stantec, and Pall will work closely over the next several weeks to ensure the plant is properly running and ready to start delivering water to the City of Lewiston in early March. Final work includes renovation of the existing finished water pump station where our team will install five new pumps with variable frequency drives.

“The 4th quarter of ‘23 was nothing short of impressive performance. The entire project has been ‘fast-track’ construction, and the last few months have definitely been just that. I am completely amazed at the speed and excellence that our teams have executed this work. This has been a tremendous workload our team has endured. Progressive design build is a new delivery method to IMCO, full of new mental and physical fatigues. I am proud of the way our crews and management staff have succeeded in this new challenge. Thank you!” said Fred Simmons, IMCO operations manager.

Congratulations to the project team for rising to this challenge, building IMCO’s first progressive design-build project.

45 YEARS BUILDING COMPLEX PROJECTS WITH INTEGRITY, EXCELLENCE & SAFETY

KENYON ST & 24TH AVE EMERGENCY WATERMAIN

In late 2022 IMCO was awarded an emergency contract, for the City of Seattle, to replace a broken 24-inch watermain by horizontal directional drilling (HDD) in West Seattle. The pipeline originally ran over Longfellow Creek and is being replaced by 700 feet of new HDPE pipe running 35 feet underneath the creek.

IMCO crews have completed the site preparation and demolition of the existing pipeline. HDD operations began on February 1st and are expected to take 15 days. IMCO crews will then connect the new pipe to the existing pipeline on each end and restore the site. Work will be complete by the end of this month.

The team is carefully managing the tight site conditions to maintain safe traffic and pedestrian access in the residential neighborhood. Foreman Darrell Asseln has been keeping the work moving forward, managing our HDD subcontractor, and prioritizing safety in the tight work zone. Project Engineer Corey Wilson is staying ahead of the paperwork for this fast-paced job. Superintendent Russell Isam is leading the work.

“This opportunity wouldn’t have presented itself, if not for the outstanding performance of the team on the Tolt pipeline project. SPU knew that IMCO was the right choice to manage this emergency project. I’ve been impressed with how this team is proactively managing all aspects of the work,” said Operations Manager CJ Handforth.



HOLDEN O&M SUCCESS

“Our team has been operating and maintaining the Holden MWTP and surrounding site operations 24 hours a day, 365 days a year, since April of 2016. The team of operations and civil maintenance personnel at Holden are bad ass! I say this because of their ability to meet the physical and mental demands of the operation every hour of every day, and because they’re a family within the larger IMCO family, working in a location where forest fires in the summer and avalanches in the winter are a constant threat. Their genuine care for each other and professionalism still impresses the hell out of me. Their hard work and dedication were showcased this Fall when the project received one of the highest safety ratings the site owner, Rio Tinto, has ever given to a remediation site!” said IMCO Operations Manager Fred Simmons.



**ALL EMPLOYEES HAVE
THE AUTHORITY AND
RESPONSIBILITY TO
STOP WORK AND
ADDRESS HAZARDS.**

If employees do not know what steps to take to address hazards, they are expected and encouraged to ask for help.

Photos captured by Will Austin Photography featuring subcontractor DDJ welding the Tolt Pipeline's 66" final connections.



TOLT PIPELINE - NEW PHOTOS